

The Palace

Sun City

The Palace
Fun City



THE MAKERS OF DREAMS. THE CREATORS OF LEGENDS. FOR OVER 25 YEARS, SUN INTERNATIONAL'S DAZZLING ARRAY OF HOTELS, RESORTS AND CASINOS HAVE SET THE BENCHMARK ACROSS SOUTHERN AFRICA AND BEYOND. WITH OFFERINGS RANGING FROM SUN-BAKED SAFARI EXPERIENCES AND SUB-TROPICAL BEACH GETAWAYS, TO DAZZLING GAMING THRILLS AND EXTRAVAGANZAS FEATURING INTERNATIONAL STARS, SUN INTERNATIONAL IS, UNQUESTIONABLY, THE ONE DESTINATION FOR IT ALL.

THE PALACE IS SUCH A PLACE. EXPECT NOTHING LESS THAN THE HIGHEST LEVEL OF SERVICE AND ENJOY A HOST OF SUPERIOR ACTIVITIES. WE AIM TO EXCEED YOUR EXPECTATIONS IN EVERYTHING THAT WE DO, ALLOWING YOU TO ESCAPE INTO THE THRILL OF YOUR JOURNEY.

LEGEND MADE REAL.

The Palace

Sun City

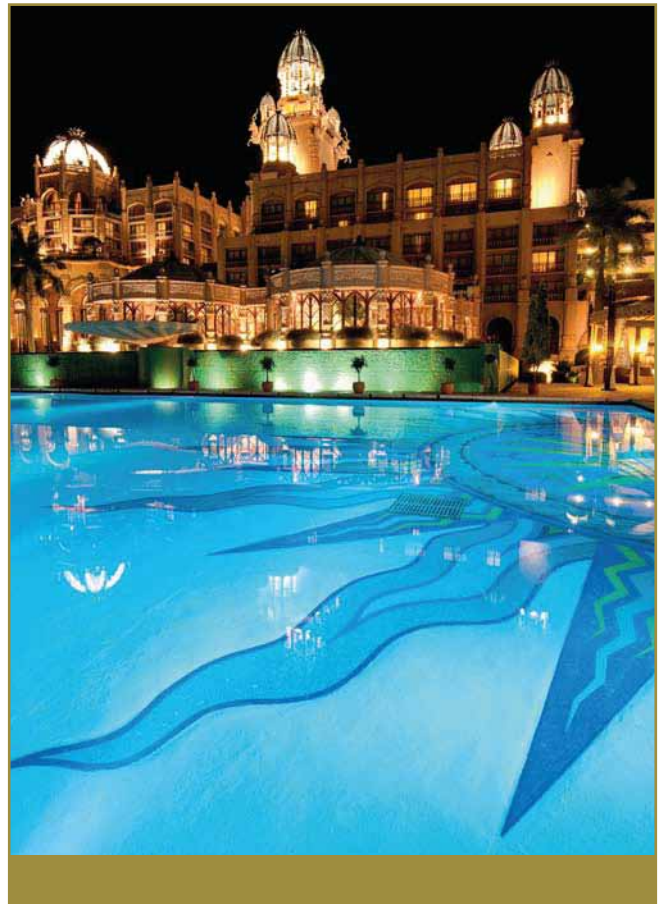
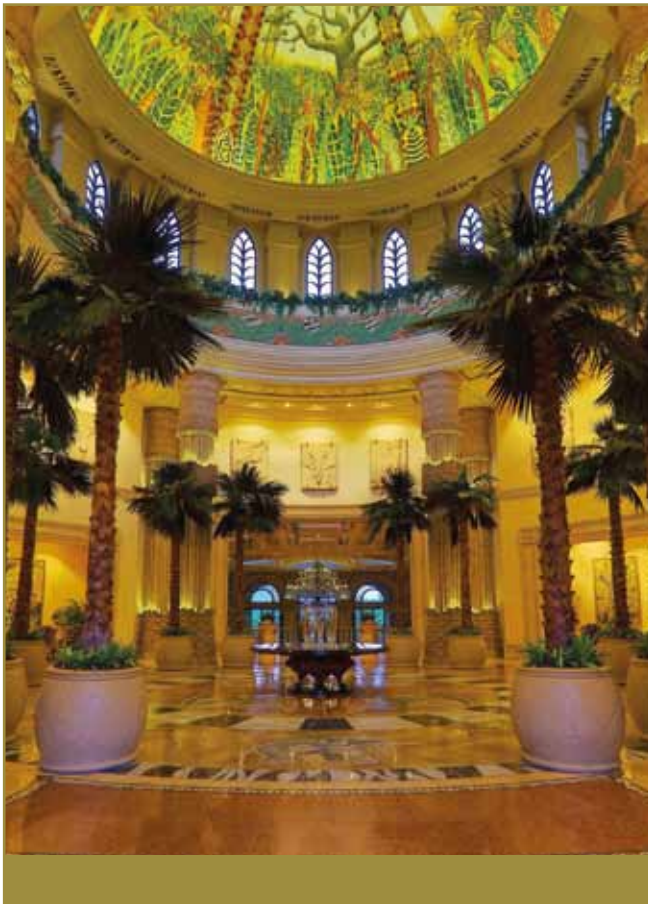


LEGEND HAS IT THAT AN ANCIENT CIVILISATION FROM NORTH AFRICA JOURNEYED SOUTH TO BUILD A PALACE FOR THEIR MUCH-LOVED KING. THEY SETTLED IN A LONG-EXTINGUISHED VOLCANIC CRATER - A VERITABLE CRADLE OF LIFE. A PLACE WHERE WEIRD AND WONDERFUL CREATURES, BOTH GREAT AND SMALL, ROAMED FREE AMIDST GLITTERING STREAMS AND DREAMY WATERFALLS. HERE, THEY BUILT A MAGNIFICENT PALACE TO

BEFIT THE SURROUNDINGS; THEIR KING WAS WELL-PLEASSED. AND SO, TO THE PALACE SERVED AS THE SPIRITUAL CENTRE OF THEIR VAST EMPIRE UNTIL AN EARTHQUAKE REDUCED IT INTO RUINS. NOW, RESTORED IN FORM AND REJUVENATED IN SPIRIT, THE PALACE OF THE LOST CITY IS A MODERN DAY MARVEL THAT WILL MAKE YOUR JOURNEY LEGENDARY.



The Palace *Sun* City



IMAGINATION EXPLORATION.

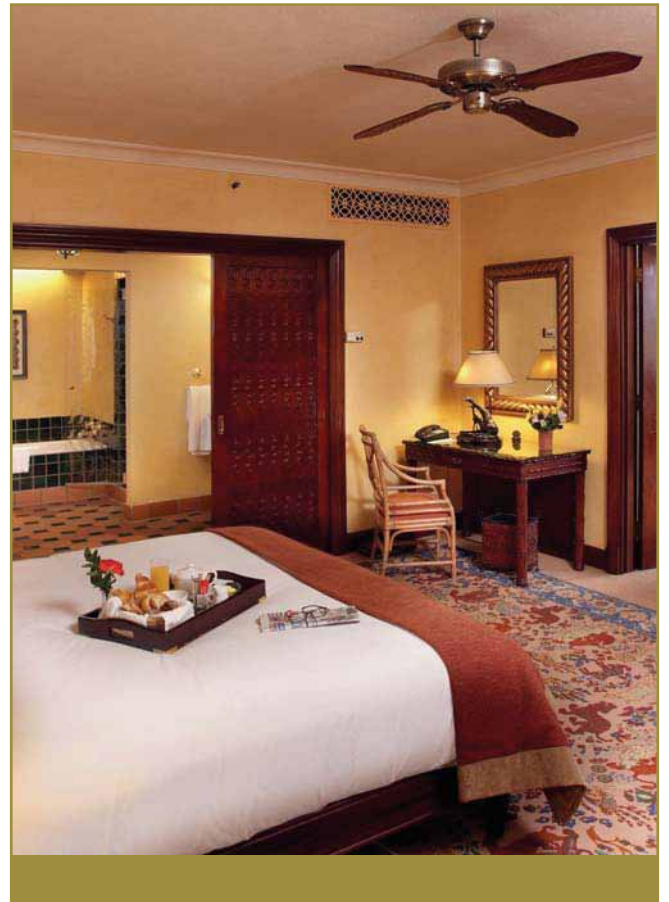
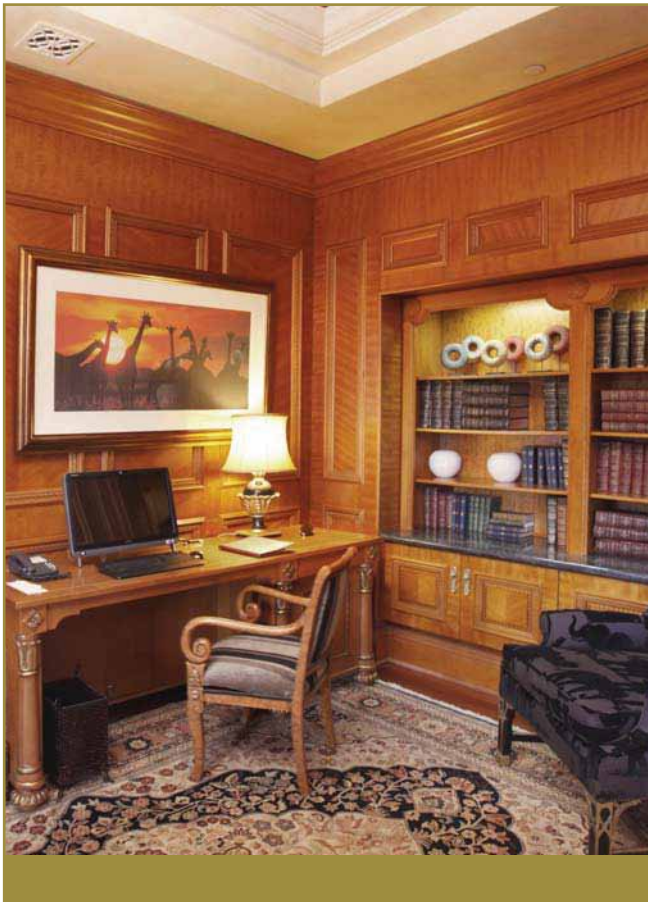


IN AMONGST THE PILANESBERG MOUNTAINS STANDS THE PALACE OF THE LOST CITY - A TRIBUTE TO MAN'S IMAGINATION AND REVERED FOR ITS ART AND ARCHITECTURE. IT IS TRULY ONE OF THE 'LEADING HOTELS OF THE WORLD'. FAUX ELEPHANT TUSKS, SCULPTURED BRONZE & CRYSTAL, RICHLY WOVEN COLOURS OF AFRICA, MYSTERY-SCENTED AIR AND JUNGLE CASCADES FUSE INTO AN ATMOSPHERE FIT FOR A KING.

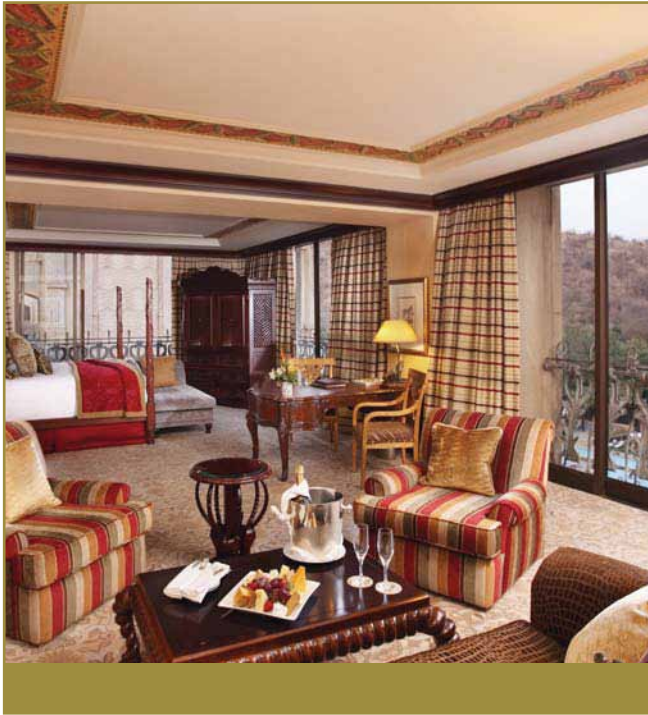
WITH FRESCO CEILINGS ABOVE AND ANCIENT TILES BELOW, YOU ARE LEFT TO STAND IN AWE AT THE SHEER SCALE OF THIS MASTERPIECE. THE WILD ELEGANCE AND SAVAGE BEAUTY IN BRONZE AND STONE CULMINATES IN A LIFE-SIZE SCULPTURE OF THE MIGHTY ELEPHANT SHAWU, WHO TAKES PRIDE OF PLACE IN THE ELEPHANT COURTYARD.



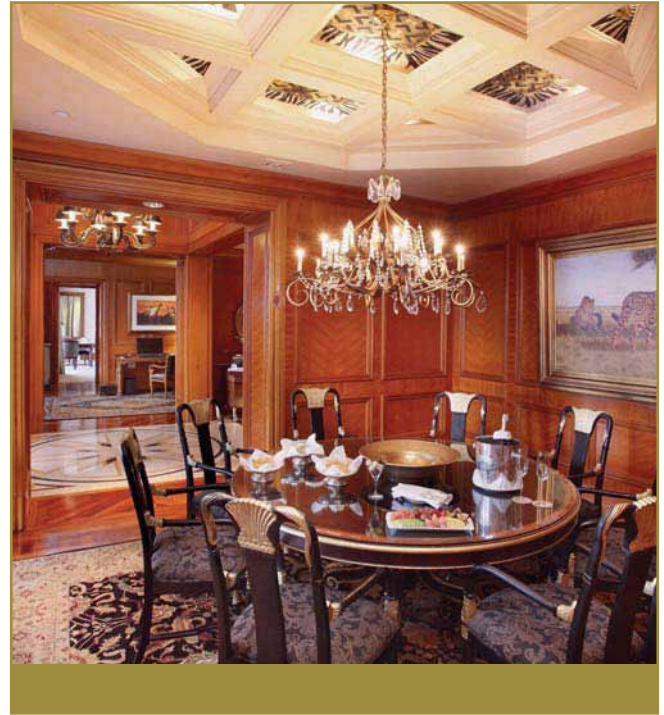
The Palace *Sun* City



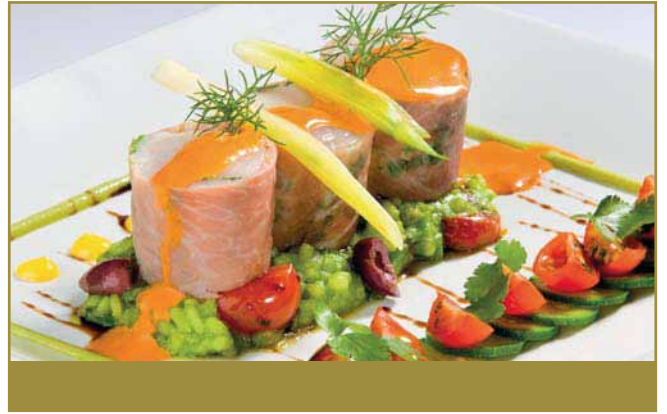
DESIGNED TO INSPIRE.



THE PALACE LAVISHES ITS GUESTS WITH 5-STAR SERVICE AND IS LUXURIOUS IN EVERY DETAIL. ALL THREE PRESIDENTIAL SUITES ARE BREATHTAKINGLY OPULENT. FROM THE DISTINCTIVE GRANDEUR OF THE AFRICAN SUITE TO THE UNFORGETTABLE KING SUITE, RESPLENDENT IN ITS MAPLE PANELLING, DELICATE FRESCO CEILINGS AND STUNNING



PANORAMAS OVER THE LOST CITY. EACH EXQUISITE SUITE REVELS IN THE MAGIC OF THIS REMARKABLE PLACE. HERE AND THERE, ARTISTIC FLOURISHES BURST WITH LIFE. EACH ROOM AND SUITE OFFERS ROYAL HOSPITALITY WITH WONDERFUL VIEWS OVER WATER OR JUNGLE AND ALL BENEFIT FROM A PERSONAL TOUCH.



The Palace

Sun City



IT'S PURE MAGIC.

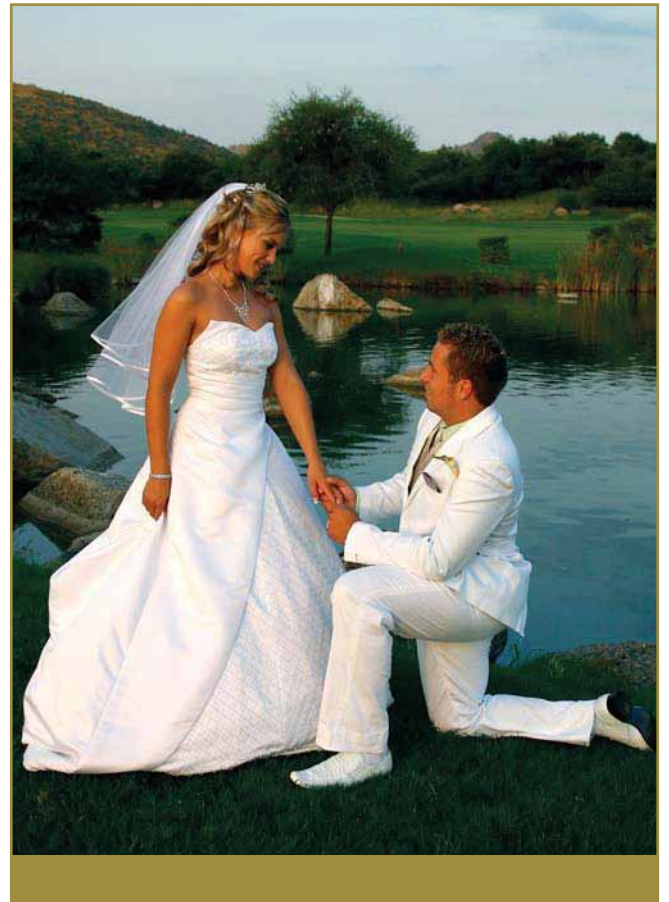


SUCCUMB TO THE CULINARY SPLENDOR OF THE CRYSTAL COURT, ENJOY A ROMANTIC DINNER AT THE ELEGANT PLUME RESTAURANT OR, FOR THE BEST A-GRADE STEAKS AT SUN CITY, LOOK NO FURTHER THAN THE GRILL ROOM @ THE PALACE. DRINK IN THE VIEW WHILE SIPPING A COCKTAIL BY THE POOL BAR OR AT THE GRACIOUS TUSK BAR. IT'S NO WONDER BUSINESS IS A PLEASURE AT THE PALACE, WITH LUXURIOUS BANQUETING AND

CONFERENCE FACILITIES RANGING FROM THE SUMPTUOUSLY APPOINTED COUNCIL ROOM, TO THE ROYAL CHAMBER. ALL THE TECHNICAL WIZARDRY YOU NEED IS ON HAND AND OUR EXPERIENCED CONFERENCE STAFF ARE ALWAYS ONE STEP AHEAD. THIS, AFTER ALL, IS THE PALACE AND YOU CAN EXPECT NOTHING LESS THAN BEING TREATED LIKE ROYALTY.



The Palace *Sun* City



KINGDOM OF PLEASURE.

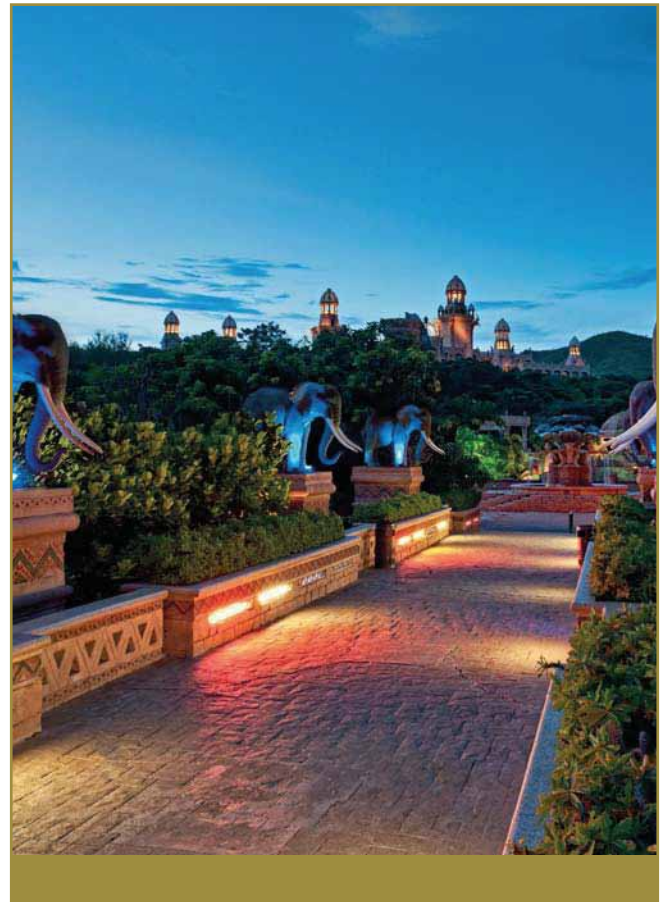
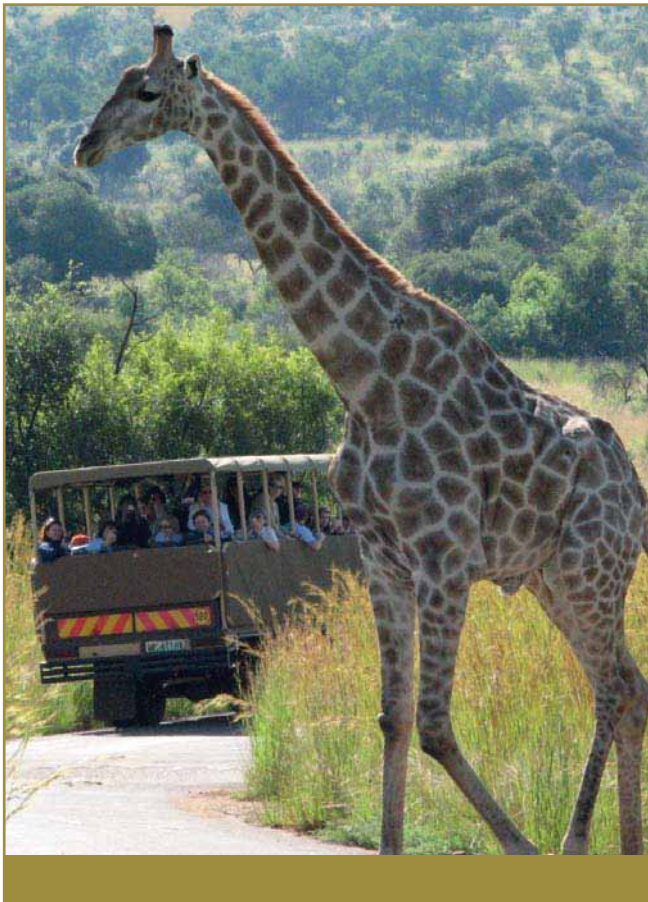


THE PALACE NESTLES WITHIN THE SUN CITY RESORT, AFRICA'S KINGDOM OF PLEASURE, PUTTING 24-HOUR THRILLS AND ENTERTAINMENT RIGHT ON YOUR DOORSTEP. STARE WIDE-EYED AT THE STELLAR SHOWS, LOSE YOURSELF IN MYRIAD ACTIVITIES OR SLIDE AND SUNBATHE IN THE VALLEY OF WAVES. PLEASURE MOMENTS MINGLE EVERYWHERE, FROM

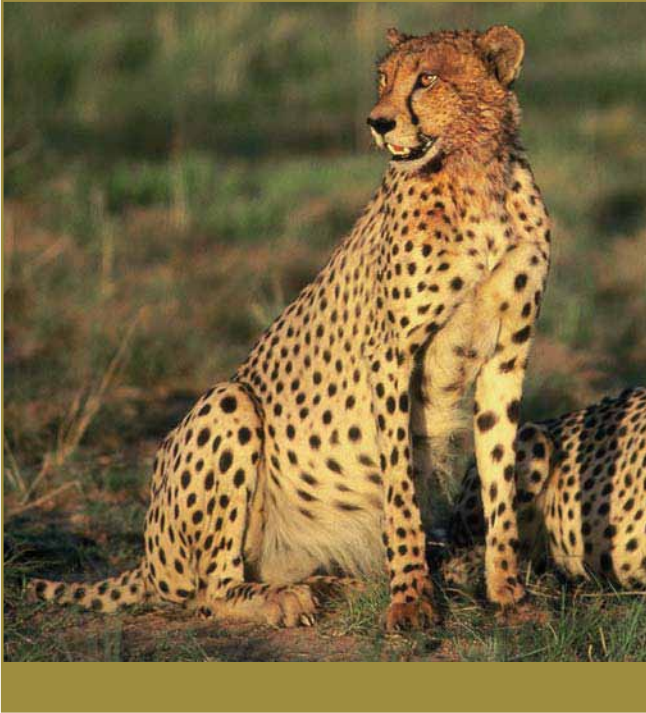
RESTAURANTS TO FOREST TRAILS TO CURIOS. DANCE THE NIGHT AWAY AT SILHOUETTE NIGHTCLUB OR TRY YOUR LUCK AT THE VIP CASINO IN THE COMFORT OF THE PALACE THEN SPEND THE MORNING AFTER IN THE GARY PLAYER HEALTH SPA FOR SOME FIVE-STAR PAMPERING. BEGINNING TO END, THE PALACE IS A JOURNEY FOR THE WORLD'S HEDONISTS.



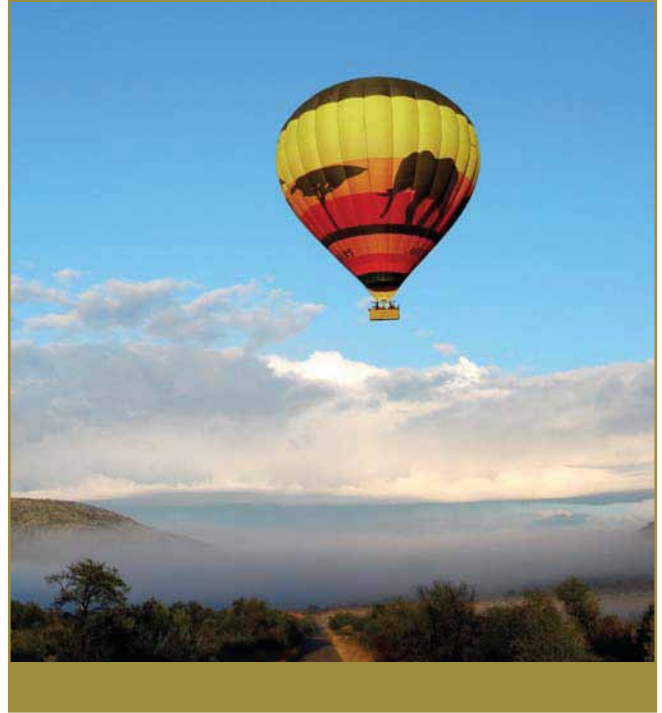
The Palace *Sun* City



FOREVER AFRICA'S FINEST.



THERE IS ENOUGH SUN AND ADVENTURE HERE FOR A THOUSAND HOLIDAYS. HOME TO AFRICA'S MAJOR, THE NEDBANK GOLF CHALLENGE, THE GARY PLAYER GOLF COURSE, TOGETHER WITH THE LOST CITY GOLF COURSE, PROVIDES TESTS AND TRIUMPHS FOR THE AMATEUR AND PROFESSIONAL ALIKE. THE VIEWS AND WILDLIFE ALONE ARE WORTH THE EFFORT OF A STROLL ALONG THE KIKUYU FAIRWAYS. FOR A CLOSER LOOK



SPEND THE AFTERNOON IN AN OPEN SAFARI VEHICLE SPOTTING THE BIG FIVE, OR ON A CRUISE AROUND THE LAKE. WHETHER YOU TAKE IN THIS KINGDOM OF PLEASURE FROM A HOT AIR BALLOON, A MASSEUR'S TABLE OR AN OPEN VEHICLE IN THE WILD, THE MAGIC OF A STAY AT THE PALACE WILL BE WITH YOU FOREVER.

The Palace

Sun City



BOOK YOUR JOURNEY TODAY.

THE PALACE OF THE LOST CITY AT SUN CITY,
PILANESBERG REGION 0316
NORTH WEST PROVINCE
SOUTH AFRICA

P O BOX 308 SUN CITY
NORTH WEST PROVINCE 0316

TEL +27 14 557 4307 FAX +27 14 557 3111

 SUNCITYSA  @SUNCITYRESORTSA

SUN INTERNATIONAL HEAD OFFICE
TEL +27 11 780 7800 FAX +27 11 780 7443
E-MAIL: CROBOOK@SUNINTERNATIONAL.COM

GPS CO-ORDINATES
S 25° 21' 33.67" E 27° 06' 26.61"

EARTHGLOW

EARTHGLOW IS SUN INTERNATIONAL'S SUSTAINABILITY PROGRAMME;
FOR MORE INFORMATION VISIT
WWW.SUNINTERNATIONAL.COM/EARTHGLOW

JOURNEYS THAT ALLOW YOU TO FIND YOURSELF AND LOSE YOURSELF AT THE SAME TIME.

SUN INTERNATIONAL CONTACT INFORMATION

CENTRAL RESERVATIONS

6 SANDOWN VALLEY CRESCENT GAUTENG
PRIVATE BAG 700 SANDTON 2146

DOMESTIC RESERVATIONS

TEL 011 780 7800
FAX 011 780 7443

INTERNATIONAL RESERVATIONS

TEL +27 11 780 7878
FAX +27 11 780 7061

SALES OFFICES

HEAD OFFICE JOHANNESBURG

6 SANDOWN VALLEY CRESCENT GAUTENG
PRIVATE BAG 700 SANDTON 2146
TEL +27 11 780 7000
FAX +27 11 780 7442
NATSALES@SUNINTERNATIONAL.COM

CAPE TOWN

THE TABLE BAY
QUAY 6 VICTORIA & ALFRED WATERFRONT
CAPE TOWN 8001
WESTERN CAPE
P O BOX 50369 CAPE TOWN 8000
TEL+27 21 406 5000
FAX +27 21 406 5686

DURBAN

15 CRANBROOK CRESCENT
LA LUCIA RIDGE LA LUCIA 4051
KWAZULU-NATAL
P O BOX 3651 DURBAN 4000
TEL +27 31 566 1802
FAX +27 31 566 1827

PORT ELIZABETH

THE BOARDWALK CASINO &
ENTERTAINMENT WORLD
2ND AVENUE SUMMERSTRAND
PORT ELIZABETH 6001
EASTERN CAPE
PRIVATE BAG 777
HUMWOOD 6013
TEL +27 41 507 7777
FAX2EMAIL +27 86 243 6400

ZAMBIA

ELUNDA 2 SECOND FLOOR
CNR CHIKWA ROAD &
LOS ANGELES BOULEVARD
LONG ACRES LUSAKA ZAMBIA
P O BOX 60151
LIVINGSTONE ZAMBIA
TEL +260 211 372757-59
FAX +260 211 261771
LUSALES@SUNINTERNATIONAL.CO.ZM



ROOM CONFIGURATION

| | |
|---------------------------------------|-----|
| • TOTAL ROOMS | 335 |
| • LUXURY TWIN ROOM | 151 |
| • PARAPLEGIC FAMILY | 3 |
| • SUPERIOR LUXURY ROOM | 76 |
| • SUPERIOR LUXURY POOL FACING ROOM | 35 |
| • JUNIOR SUITE | 6 |
| • SUPERIOR SUITE | 6 |
| • PRESIDENTIAL SUITE | 3 |

IN-ROOM FACILITIES

- AIRCONDITIONING
- HAIRDRYER
- MINI-BAR
- 24-HOUR IN-ROOM DINING
- INTERNATIONAL DIRECT-DIAL
- TELEPHONE
- TELEVISION
- VOLTAGE 220V
- ELECTRONIC SAFE
- VALET

RESTAURANTS

- PLUME
- THE GRILL ROOM
- THE CRYSTAL COURT
- THE TUSK BAR
- POOL DECK

BARS

- THE TUSK BAR
- THE POOL BAR

CONFERENCE FACILITIES

- ACCOMMODATION FOR UP TO
1 200 DELEGATES ACROSS THE
SUN CITY RESORT

RESORT FACILITIES

- BOMA DINNERS (BUSH DINING)
- ON SELECTED DATES
- BOTANICAL GARDENS
- BUSINESS CENTRE
- CAR HIRE
- CASINO - TABLE GAMES AND SLOTS
- CINEMA
- CONCIERGE DESK
- CREDIT CARD FACILITIES
- CULTURAL VILLAGE
- FAST FOOD OUTLETS
- GAME DRIVES
- GAMES AND VIDEO ARCADES
- GOLF:
- LOST CITY GOLF COURSE
- GARY PLAYER GOLF COURSE
- GYM
- HAIRDRESSING SALON
- HEALTH SPA
- KAMP KWENA CHILDREN'S CLUB
- FINDERS KEEPERS /
SCRATCH PATCH
- KWENA GARDENS
CROCODILE FARM
- OUTDOOR ADVENTURE CENTRE
- JOGGING TRAILS
- MOUNTAIN BIKING
- NIGHTCLUB - ADULTS
- PARASAILING
- RESTAURANTS AND BARS
- SAUNA
- SEGWAY - FUTURISTIC SCOOTERS
- SHOPPING
- SWIMMING
- TENNIS
- THE MAZE OF THE LOST CITY
- VALLEY OF WAVES
- WATERSPORTS
- WEDDING CHAPEL
- ZIP SLIDE



The Palace

Sun City

SUNLUX
COLLECTION

CAPE TOWN · SUN CITY
VICTORIA FALLS



THE LEADING HOTELS
OF THE WORLD®

www.suninternational.com