

Sun Boardwalk

Why Stay Here?

- The Boardwalk's stunning beachfront location is the ideal resort for locals, tourists and corporate travellers.
- The 5 star Boardwalk with its graceful Victorian-style architecture is renowned among travellers for being the best hotel in Port Elizabeth.
- The Boardwalk offers secure and direct access to a vibrant entertainment precinct designed around a lake and offering a choice of alfresco restaurants, speciality shops, a casino, cinema, amphitheatre and children's entertainment facilities.
- The architectural design is Victorian combined with contemporary charm and panoramic views of golden beaches, Shark Rock Pier and the Indian Ocean.
- Guest rooms are comfortably appointed in a mid-century décor style with modern conveniences such as LED TVs, luxurious beds, mini bars and bijou balconies offering views of the Indian Ocean.
- High Tea in the hotel lobby
- Multi-media lake spectacular - a musical fountain choreographed to dance in time to popular music – a must see attraction for everyone.
- Positioned on the Golden Mile and within easy walking distance to Hobie Beach.
- The Boardwalk has an airport shuttle service and complimentary parking at the hotel.
- The Boardwalk offers free, uncapped high speed Wifi throughout the hotel and rooms.
- Fully equipped business centre and several boardrooms all complete with modern facilities and technology.

Location

The Boardwalk, 2nd Avenue Summerstrand, Port Elizabeth 6001, South Africa
Private Bag 777, Humewood 6013, South Africa

GPS: E 25° 39' 29.25.9" S 33° 59' 13.6"

Tel: +27 41 507 7777 Fax2email: +27 86 243 6400

Email: crobook@suninternational.com suninternational.com

[f @boardwalk.elizabeth](https://www.facebook.com/theboardwalkelizabeth) [t @TheBoardwalkPE](https://twitter.com/TheBoardwalkPE)

- | | | | |
|--|-------------|---------------|--------|
| • Port Elizabeth International Airport | 5km/10 mins | • East London | 300km |
| • Port Elizabeth CBD | 5km/10 mins | • Cape Town | 800km |
| • Hobie Beach | 5 mins | • Gauteng | 1100km |

Accommodation

140 rooms in total, including:

- 43 x Luxury Twin rooms – 35m² – Situated on floors 1-4. Twin beds side by side – beds can be split. Separate bath and shower facilities.
- 74 x Luxury King rooms – 35m² – Situated on floors 1-4. 1 x king size bed. Separate bath and shower facilities.
- 4 x Superior Luxury rooms – 71m² – Situated on floors 1-4. 1 x king size bed. Separate bath and shower facilities. Can be inter-leading with a Luxury Twin room.
- 8 x Superior Luxury Suites – 88m² – Situated on floors 1-4. 1 x king size bed. Separate bath and shower facilities. Separate lounge and dining room table (seating 4). Rollaway bed on request.
- 2 x Luxury Accessible rooms – 35m² – Situated on floors 1 and 2. 1 x king size bed. Separate bath and shower facilities with handrails. Wider doorways to allow for easy wheelchair access. Can be inter-leading with a Luxury Twin room.
- 8 x Junior Suites (Duplex) – 62m² – Situated on the 4th floor. 1 x king size bed. Separate bath and shower facilities. Separate lounge and dining room table (seating 4) (35m²) on the entrance level (4th floor) with an internal staircase leading up to the bedroom (27m²) on the top floor. Guest toilet.
- 1 x Presidential Suite 1 – 72m² – Situated on the 2nd floor. 1 x king size bed. Separate bath and shower facilities. Separate lounge and dining room table (seating 6). Guest toilet. Rollaway bed on request. Can be inter-leading with a Luxury Twin room.

Facilities

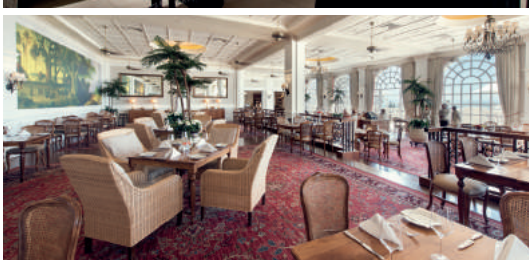
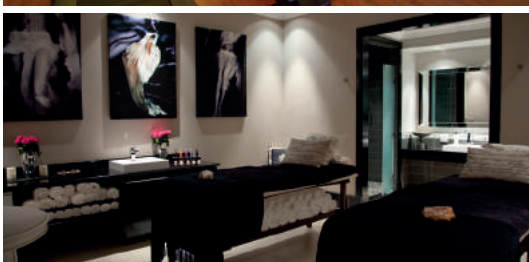
There's a broad spectrum of culinary treats available at The Boardwalk ranging from Greek to Indian to Italian cuisine. With eight different restaurants each specialising in a different culinary style as well as a wide range of fast food outlets, the myriad flavours satisfy every palate.

- Kiplings Restaurant - located in the Boardwalk Hotel and Spa. Inspired fine-dining menus will take guests on a gourmet journey, using the freshest produce. Buffet breakfast and à la carte dinner is served. Seating capacity: 150
- Tshawe Bar - named after King Tshawe, the Tshawe Bar offers a selection of premium beverages and fine cigars. This is a smoking venue. Seating capacity: 86
- Lobby Lounge - a relaxing and spacious area with views of the Indian Ocean. Light meals are available daily. Seating capacity: 52

Complex Restaurants and Bars

- Bayside Pantry - situated in the non-smoking section of the casino. This luxury restaurant offers both à la carte and buffet meals. Seating capacity: 106
- Casino Entertainment Bar - The Bravo Bar, situated inside the casino, provides live entertainment, sports broadcasts, revues, comedy and karaoke.
- Charter Club Bar - This bar is situated inside the exclusive Salon Privé and is a private area for players who enjoy secluded gaming. Full service bar and snack menu.
- Leonardo's - famous for its pizza and pasta dishes, Leonardo's serves authentic Italian dishes, hosted within a lively atmosphere with charming Italian décor.
- Coast Restaurant - Upmarket bi-level eatery serving West Coast seafood, with a huge circular oyster bar & cocktails. For those who enjoy the meatier side of life, Coast also offers a small selection of grill items.
- Africology Spa features holistic massage and treatment rooms, steam rooms, hydrotherapy tubs and an indoor heated pool.
- Outdoor pool overlooking the Indian Ocean
- Onsite travel desk for all travel needs ranging from airport transfers to day excursions
- Nelson Mandela Bay Tourism - for all tourism information, safari and day trip reservations and tour packages.





Boardwalk

- Shopping. • Casino. • Cinema. • Adventure Golf. • Algoa FM - the Eastern Cape's popular radio station is housed on the complex.
- Festival Lawn - ideal venue for hosting picnic style events.
- Boardwalk Amphitheatre - This premier entertainment venue is enclosed and regularly hosts sell-out shows.
- Children's rides - A Victorian style carousel, aeroplane ride. • Go karting.
- Golf - The Humewood Links Golf Club is located 10 minutes away. • Fitness Centre.
- Kids Corner - a crèche for children between the ages of 6 months and 12 years.
- The Magic Company - family fun area offering an exciting range of videos and interactive games.
- The Lighthouses offers 16 lanes of ten pin bowling.
- Multi-media lake spectacular - one of the largest musical water extravaganzas in South Africa.

Event and Entertainment Venues

The Boardwalk International Convention Centre is one of the Sunshine Coast's most accomplished host. Located on the beachfront, this flexible meeting space offers spacious facilities along with a wealth of flexible options to enhance any meeting or conference. It contains more than 3 000m² of meeting space and breakaway rooms and is able to accommodate large conference groups.

Venue	Banquet					Cinema			Schoolroom	Exhibition	Cocktails	U-shape	Boardroom
	Stage	Stage buffet	Stage buffet dance	Stage dance served	Stage rear projection buffet	Stage	Stage rear projection	Sports style raised platform	Stage	3x3 Stage			
Tsitsikamma													
A	1000	800	700	950	800	1600	1600	1600	900	90	1600	-	-
B1	400	350	300	350	300	700	650	700	450	45	800	-	-
C1/C2	250	200	180	200	180	400	350	400	210	30	400	-	-
D1/D2	100	90	70	90	-	200	175	200	120	15	50	-	-

Breakaway Rooms													
Stinkwood	30	-	-	-	-	30	-	60	28	-	30	24	20
Redwood	30	-	-	-	-	30	-	50	28	-	30	24	20
Ironwood	30	-	-	-	-	30	-	50	28	-	30	24	20
3 x joined	110	-	-	-	-	120	-	110	85	-	90	40	40
YellowWood (1)	-	-	-	-	-	20	-	-	-	-	-	-	10
YellowWood (2)	-	-	-	-	-	20	15	15	12	-	10	8	10

Venue	Door Width	Door Height	Height	Room Length	Room Width	Sq. Metres	Cube Metres
Tsitsikamma							
A (Full)	1.4m	2.4m	6.0m	49.645m	39.0m	1 880m ²	11 280m ³
B.1 (1/2)	1.4m	2.4m	6.0m	39.0m	24.8m	947.8m ²	5 686.8m ³
B.2 (1/2)	1.4m	2.4m	6.0m	39.0m	24.84m	932.2m ²	5 593.2m ³
C.1 (1/4)	1.4m	2.4m	6.0m	24.8m	19.5m	456.2m ²	2 856m ³
C.2 (1/4)	1.4m	2.4m	6.0m	24.8m	19.5m	456.2m ²	2 736m ³
D.1 (1/8)	1.4m	2.4m	6.0m	19.5m	11.49m	242.3m ²	1 453.8m ³
D.2 (1/8)	1.4m	2.4m	6.0m	19.5m	11.49m	213.8m ²	1 282.8m ³

Breakaway Rooms							
Stinkwood (3)	1.4m	2.4m	4.5m	9.545m (10.585m)	5.832m	59m ²	265.5m ³
Redwood (1)	1.4m	2.4m	4.5m	9.545m	5.885m	55m ²	247.5m ³
Ironwood (2)	1.4m	2.4m	4.5m	9.545m	5.832m	54m ²	243m ³
3 x joined	1.4m	2.4m	4.5m	17.550m	9.545m	168m ²	756m ³
YellowWood (1)	1.4m	2.4m	4.5m	7.83m	4.77m	36.4m ²	163.8m ³
YellowWood (2)	1.4m	2.4m	4.5m	7.83m	4.77m (5.8m)	40.9m ²	184m ³

Things To Do

- Access to beaches, rivers, lagoons and hiking trails.
- Coastal drives to Addo Elephant National Park, the Tsitsikamma Forest and the rugged Baviaanskloof Nature Reserve.
- Surf with dolphins. • Bungee from one of the highest points in the world.
- Explore the picturesque 1820 Settler authenticity of Grahamstown and Bathurst.
- Protected areas for swimming, fishing, surfing, scuba diving, snorkelling and sailing.
- Day trip to the Tsitsikamma National Park, and get close to one of the Big 7 in Addo Elephant National Park. 72km away. The park is also sanctuary to a multitude of other wildlife species and offers a range of exciting eco-activities such as horse trails, 4x4 trail, hiking trails, game viewing, guided game drives and viewing. • Donkin Heritage Trail.
- Take a walk through Settler history - the 5km Donkin Heritage Trail is a self-guided walk marked with a blue staggered line that takes you past 47 places of historical interest in the old Hill area of central Port Elizabeth.
- Nelson Mandela Metropolitan Art Museum.
- Tsitsikamma National Park - The Tsitsikamma's spectacular scenery includes Indian Ocean breakers, rocky shores beneath 180m high cliffs, beautiful indigenous forest and Fynbos (Cape Floral Kingdom).
- Storms River Adventures - On offer are activities in and around the Tsitsikamma Park including canopy tours and walking trails.
- Bloukrans River Bridge Bungee Jumping - Situated along the Garden Route at the Tsitsikamma Forest Village Market, you will find the highest bungee jump in the world. The Bloukrans Bridge is 216 meters (709 feet) above the Bloukrans River.

SITUATED ALONG ONE of the most unspoilt beaches in Southern Africa, the Wild Coast Sun is a family-friendly resort that attracts visitors with its natural beauty and numerous activities.

LOCATION

Less than a two-and-a-half-hour drive, along the South Coast, from Durban's King Shaka International Airport, the resort sits on 750 hectares overlooking the Indian Ocean between the Mtamvuna and Mzamba rivers.

MEETING AND EVENT SPACES

Plan your conference, function or team-building event with ease at Wild Coast Sun's conference venues and facilities aided by highly skilled and dedicated staff.

The conference centre provides you with a variety of exceptional venues, supported by professional technicians and coordinators.

All conference rooms are equipped with wall-to-wall carpeting, air conditioning and independently controlled lights with dimming capabilities. Should your function require it, access to necessary sound and AV equipment can be made available.

With 12 venues, two preassembly areas, vast lawn areas and the 670-seater Tropical Nights Auditorium, you can be assured that your function will be expertly managed and catered for, with the level of service and experience you can expect from a Sun International resort.

ACCOMMODATION

Relax in four-star beachfront hotel accommodation in Umzamba Beach at the Wild Coast Sun. Each of the 396 rooms and suites enjoy the tranquil views. Soak up the vista of the Indian Ocean from your sea-facing suite, or reclaim your inner calm looking out over the rolling greens of the golf resort from your garden-facing suite.

CATERING

The banqueting department can arrange custom menus, catering and decor – all tailored to suit your budget – for events up to 900 guests.

VENUES AND CAPACITIES

Room Name	Banquet Buffet	Banquet Served	Boardroom	Cinema	Cocktail	Dance Buffet	Schoolroom	U-shape
Amadiba Ballroom (A&B)	500	600	-	900	800	460	500	-
Msikaba (1-4) Conference Venues	220	300	30	300	500	180	250	-
Mtamvuna	160	200	-	250	300	140	150	80
Mzamba	60	80	-	80	100	-	50	40
Topical Nights Auditorium	-	-	-	670	-	-	-	-



Main Bizana Road, 5.2 km south of Port Edward,
Eastern Cape
+27 (0)39 305 9111
wcs.banqueting@suninternational.com
www.suninternational.com/wild-coast-sun